



Society of Hispanic Professional Engineers Houston Professional Chapter Newsletter Region V

June 2009

Volume III Issue 2

Dear Members,

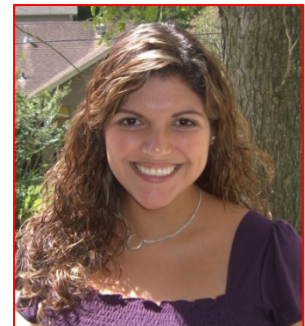
The 2008-2009 membership year expired on 30 June 2009 and I am happy to announce we have closed the books with a record membership of 73 members! Congratulations and thanks to everyone for being part of this huge accomplishment! **Please help us in keeping and beating this record for the 2009-2010 year by renewing your membership online : <http://oneshpe.shpe.org/wps/portal/national>**

The record membership was just one of the greatest accomplishments for the chapter this year. We also reached a key milestone by achieving 501.3c status as a registered non-profit organization with the IRS. This accomplishment will make the organization more attractive for receiving funding from individual benefactors and corporations. Additionally, we had a very active year in our three focus areas (outreach, professional development, and networking) with a full program of events planned for every month of the year. The membership presence, enthusiasm and active participation in all of the planned events has been very encouraging and continues to be key to the growth of the chapter. Another key accomplishment was the establishment of partnerships with Jefferson Davis High School and Harvard Elementary School. This enables SHPE Houston to have an influence in the career choices and interests of K-12 students through events hosted at these two schools.

Thanks to the commitment and hard work of SHPE Houston's leadership and members, the chapter was recognized with the "Outstanding Large Chapter" of the year award at the Regional Leadership Development Conference in Austin, TX. Our chapter's president, Rubi Medina, was also honored with the Lobo Leadership Award for her dedication, hard work, and leadership in bringing the chapter this far in its history. Please join me in congratulating Rubi for her recognition and wishing her well as she pursues her MBA. Congratulations to everyone for our success!



SHPE Houston wins Region 5 Outstanding Large Chapter Award



Rubi Medina obtains Lobo Leadership Award

MEMBER TESTIMONIALS - Why SHPE as a professional?

Please tell us how SHPE is impacting your life by emailing membership@shpehouston.org

"When I first joined SHPE as a freshmen in college, I was simply trying to build up my resume with extracurricular activities. Little did I know that my involvement with this organization would take me across the country for an internship with Chevron after my sophomore year. Three summer internships and three years of full-time employment later, I am still at Chevron in a career that has taken me around the world, and which continues to challenge me. I continue to be actively involved in SHPE as a professional member because I believe there is more to be gained from the networking environment SHPE fosters. I also want to help build the next wave of Hispanic engineers by reaching out to elementary, high school, and college students to make them aware of the great opportunities a career in engineering has to offer."

- Ever Hernandez, Facilities Engineer, Chevron Energy Technology Company

"My initial interest in SHPE derived from free food in college, and to be quite honest, bragging rights... As a professional member, being part of this organization continually provides great networking, professional development and community service opportunities that allow me to be a successful and productive member of society, not to mention that it looks really good on my resume. Giving a little bit of my time to SHPE is one of those investments that just keeps on giving; whether mentoring children or tasting tequila, I am proud to be a part of this fantastic organization."

- Jose Garcia, Sales Training Associate, Mitsubishi Caterpillar Forklift America Inc.

PREVIOUS EVENTS

PROFESIONAL DEVELOPMENT SERIES

Our career development workshop series continue to take place during our monthly general meetings. Below are some highlights from the 2nd Quarter 2009 meetings:

April – Irene Zucker from Verbacom Executive Development spoke to the members about how “Branding Yourself” in a positive way can shape people’s perceptions of you for the better. The event was a success with a large membership attendance.

May – Rick Byrd from Learning Designs Incorporated provided members with some tips on how to effectively resolve conflicts in any situation. The workshop was very fun and interactive!

OUTREACH

April - The Order of the Engineer induction ceremony was performed at the University of Houston. Two new members were inducted. This year the event was coordinated by Jesse Ramos, thank you!

May – Over 41 scholarship applications were received in April and then reviewed by the scholarship committee in May. Two \$1000 and two \$500 scholarship winners were selected! Congratulations to the recipients: Mario A. Gonzalez, Rice University; Carmen A. Valladores, Bay City High School; Christine Fuentes, University of Texas; Marisol Arzola, Sam Houston Math, Science, and Technology Center.

SOCIAL NETWORKING

April – Our first ever Tequila Tasting Fundraiser went well; we were able to recover the costs and had some extra money to add to our scholarship fund! Araceli Fernandez did a great job hosting the event and teaching us all about the different types of tequila. Thanks!

May – A few of our members kept a long standing tradition alive by participating in the ESE Cup Volleyball Tournament!

June - We held our general meeting at Buca di Peppo Italian Restaurant to celebrate the end of the year. The results of the 2009-2010 board election were presented to the members who attended. Please go to our website to learn the faces of our new board!

NEXT GENERAL MEMBERSHIP MEETING

Check our website to find out the time and place of our next general meeting!

2008-2009 SHPE Houston Leadership Team

Rubi Medina, President
Mechanical Engineer, John Crane Inc.
Isaac Tapia, Vice President
Petroleum Engineer, Hess
José De La Peña, Treasurer
Civil Engineer, Klotz & Associates
Robert Silva, Secretary
Mechanical Engineer, Bechtel
Christina Tapia, Student Affairs
Geophysicist, ExxonMobil
Teri Houle, Community Outreach
Subsea Specialist, Chevron Corporation
Christine Cano, Social/Nominations
Petroleum Engineer, BP
Araceli Fernandez, Social
Mechanical Engineer, Fluor
Ever Hernandez, Membership
Subsea Specialist, Chevron Corporation
Gabriel Valencia, Webmaster
Electrical Engineer, HP



On the right, Araceli Fernandez discussing the differences between different tequilas



End of Year Dinner and board election results at Bucca di Peppo!

Society of Hispanic Professional Engineers
PO Box 271704
Houston, TX 77277
SHPE@SHPEHouston.org
www.shpehouston.org

